

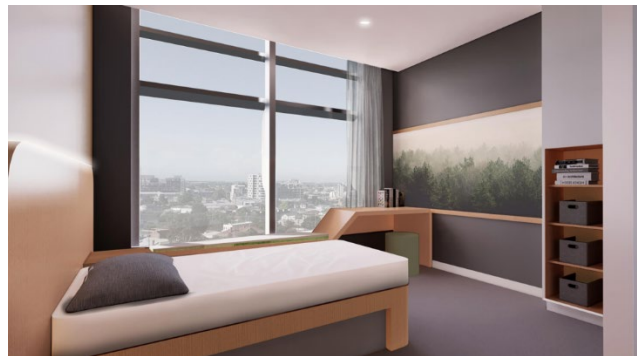
August 2022

Welcome to the latest update about the New Footscray Hospital Project (NFH) for Western Health nurses. Great progress is being made both on and off site, and we'd like to take this opportunity to thank you for your ongoing commitment to the project. We've already held more than 800 user, reference and working group meetings over the NFH design process so far, and our nursing teams have played a critical role throughout. We look forward to continue working with you as we get closer to the opening of the new hospital in 2025.

Prototypes

We're really pleased to let you know that the prototypes of various NFH rooms are being finalised and will be ready for inspection from mid-next week.

The prototype rooms, which are in a warehouse in Sunshine North, are near replicas of the real thing, and fully fitted out with furniture and equipment. The rooms on display include: an inpatient bedroom and ensuite, mental health inpatient bedroom and ensuite, intensive care room, anaesthetic room, operating theatre, hand wash bay, and emergency department bays.



Artist impression of patient bedroom

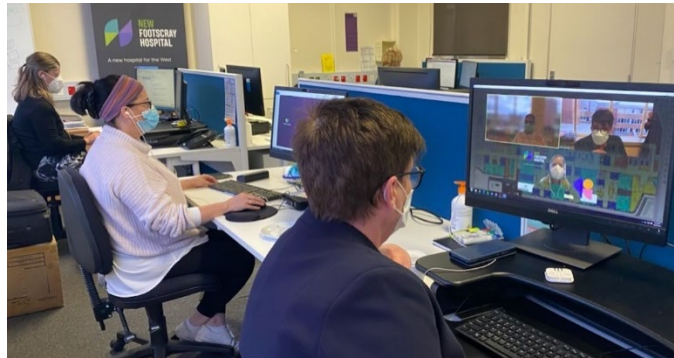
While there are some limits on numbers of visitors to the prototypes due to COVID-19, the NFH Project team has sent out invites to NUMs, as well as NFH user and reference group members. There will be bus transport from Footscray Hospital to the warehouse. If you are not part of these groups but would like the opportunity to visit the prototypes, please contact your NUM or line manager, and then follow up with an email to nfh@wh.org.au.

Just as was the case with the room "mock ups" last year, feedback from visits to the prototypes is really critical and will be fed back into the design process. As our single biggest workforce, your clinical expertise and feedback will be a vital part of this process.

Design Stage 2 (DS2)

DS2, which began last September, will be completed by the end of the year. This key stage of the design process is focused on room-level detail, with decisions being made on the placement of everything from major pieces of equipment to individual power points and sharps containers.

The input of our nurses – through the user and reference group meetings, as well as the Nursing Advisory Group has been crucial to the success of this intensive process. Thank you to the many nurses who are taking part in this ongoing series of online meetings, particularly given the very significant pressures you're facing due to the pandemic. We really appreciate your dedication to the NFH Project.



As part of DS2, the NFH Project Team receives a final submission plan from Plenary Health covering two floors at a time. These submissions include detailed drawings. In the event the Project Team uncovers issues with this material we take this back to our department user groups to ensure all of the previous feedback has been captured and correctly documented.

So far, we have reviewed Basement and Lower Ground, and we are currently working on Ground and Level 1. This process will continue until late 2022, when we will receive the final DS2 submission for levels 8-10. We will keep you updated of the progress.

As we finish each DS2 review, the NFH design team will work on resolving any issues before we move to Design Stage 3 (Construction Documentation). This stage involves completing a room layout sheet for every single room in the hospital – ready for the builders.

Construction update

If you've recently driven past the site, on the corner of Geelong and Ballarat roads, you'll have noticed that great progress is being made by the construction team. All 10 cranes have been on site since late last year, and we've hit a few big milestones in recent weeks.

Bulk earthworks are now complete. An incredible 360,000 cubic metres of dirt and hard rock have been removed from the site since construction began in March 2021. During that time, more than 24,000 trucks have moved through the site.

The inpatient tower unit is now visible above the hoardings along Geelong Rd. More than 500 construction workers are now on site daily, and that number will grow to about 2000 next year.



Next steps

As the project continues to progress, we will seek input and feedback from our nurses at Footscray Hospital and from the Nursing Advisory Group. The next topics for discussion include:

- Model of care – for example, staffing and team considerations
- Patient journeys
- Nursing workflows
- Nursing technology systems and devices
- Medication procedures and automation

Thanks for taking the time to read this update. Please feel free to email Jo Mapes, Nursing Lead at joanne.mapes@wh.org.au or the NFH Project Team at nfh@wh.org.au if you have any questions, and check out our New Footscray Hospital Project microsite at nfh.wh.org.au.

Robert Rothnie
Project Director, New Footscray & Melton Hospitals

Jo Mapes
Nursing lead, NFH Project